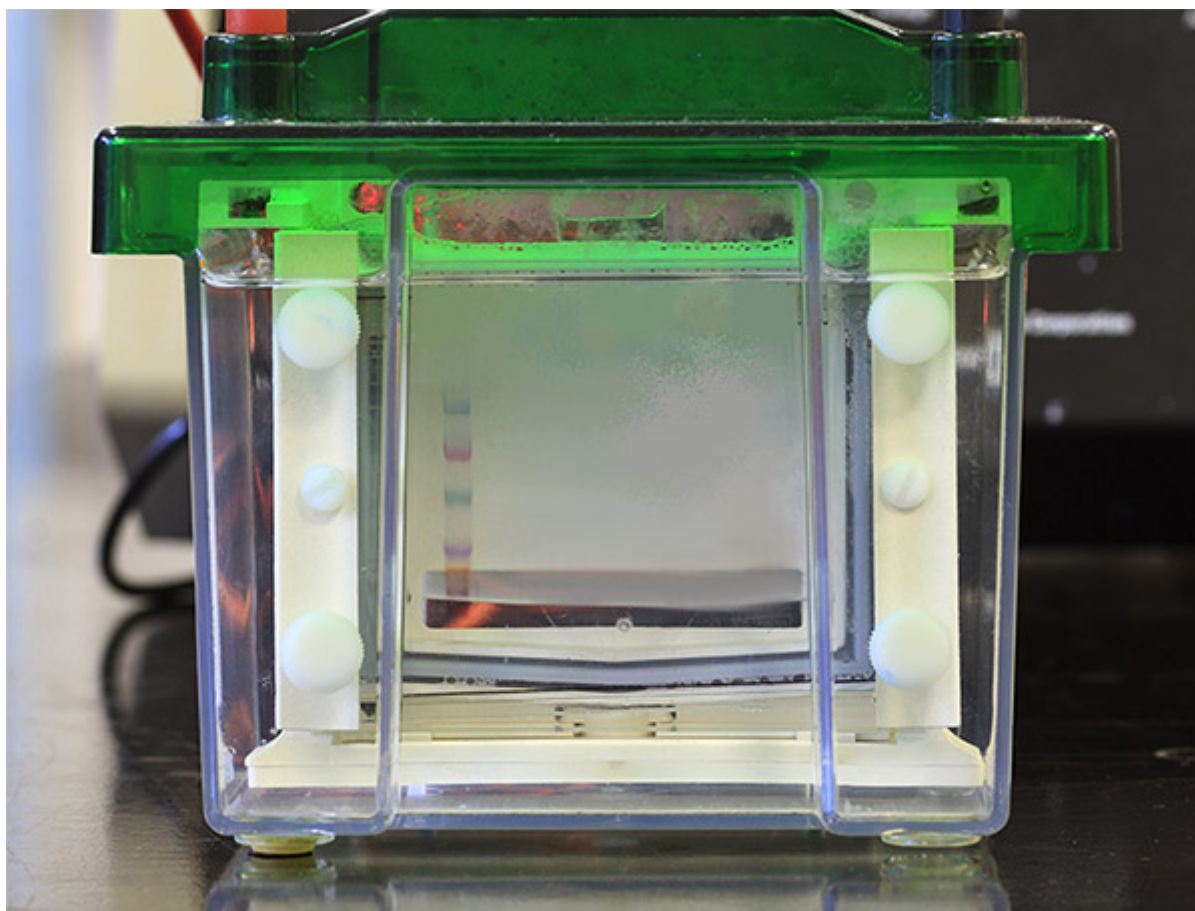




Part 1: Introduction and Sample Preparation

- [Introduction to Western blotting](#)
- [Sample Preparation](#)
- [Buffers](#)

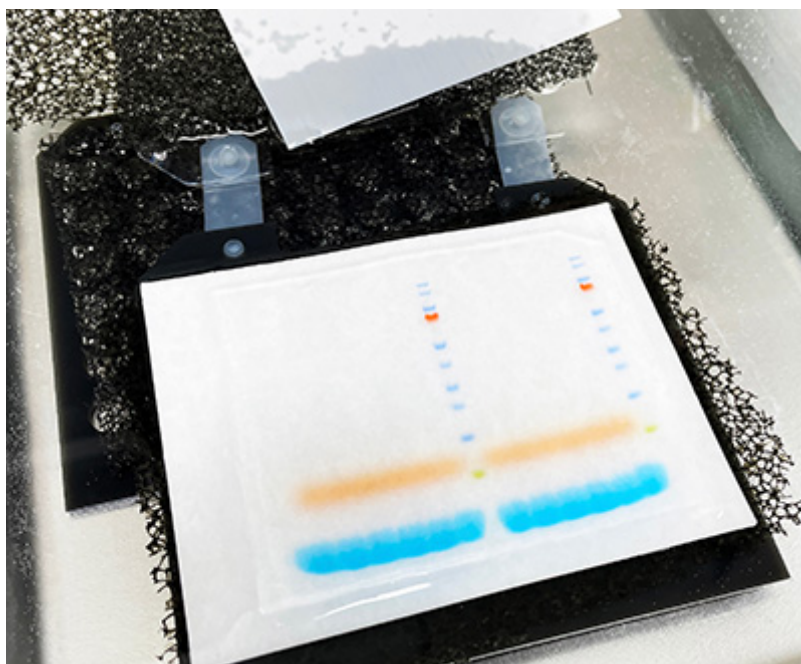
[Learn More](#)



Part 2: Protein separation by SDS-PAGE

- [Polyacrylamide Gels](#)
- [Molecular Weight Markers](#)
- [Controls](#)

[Learn More](#)



Part 3: Electroblothing - Protein Transfer

- [Factors to Consider During the Transfer Step of Western Blotting](#)
- [Electroblothing Methods](#)
- [Confirmation of Protein Transfer](#)

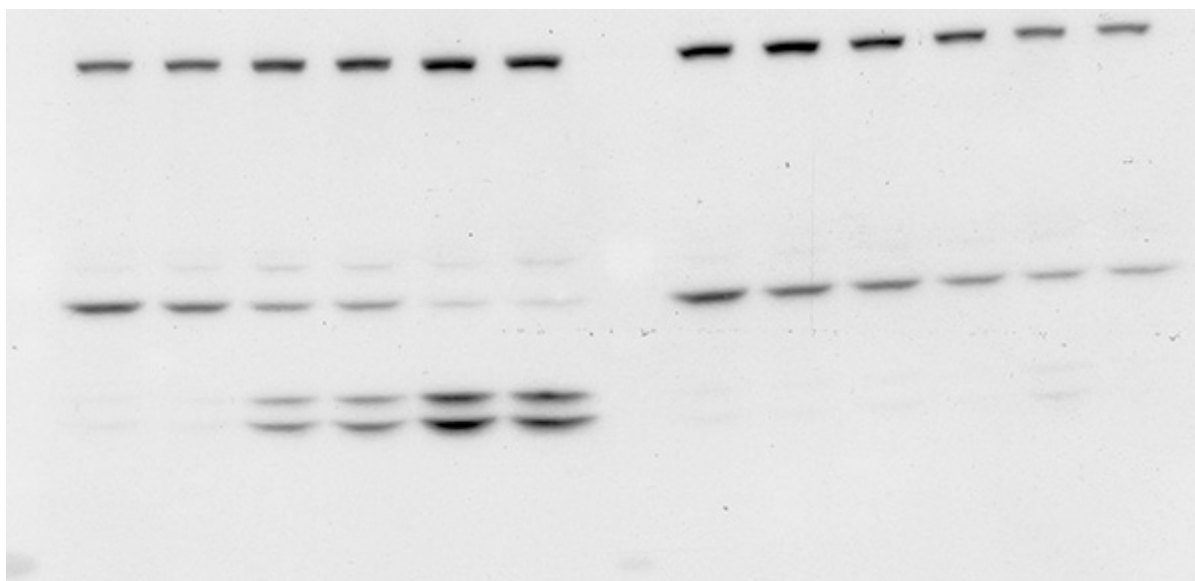
[Learn More](#)



Part 4: Membrane blocking

- [Choosing an Appropriate Blocking Reagent](#)
- [Incubation Duration and Washing](#)

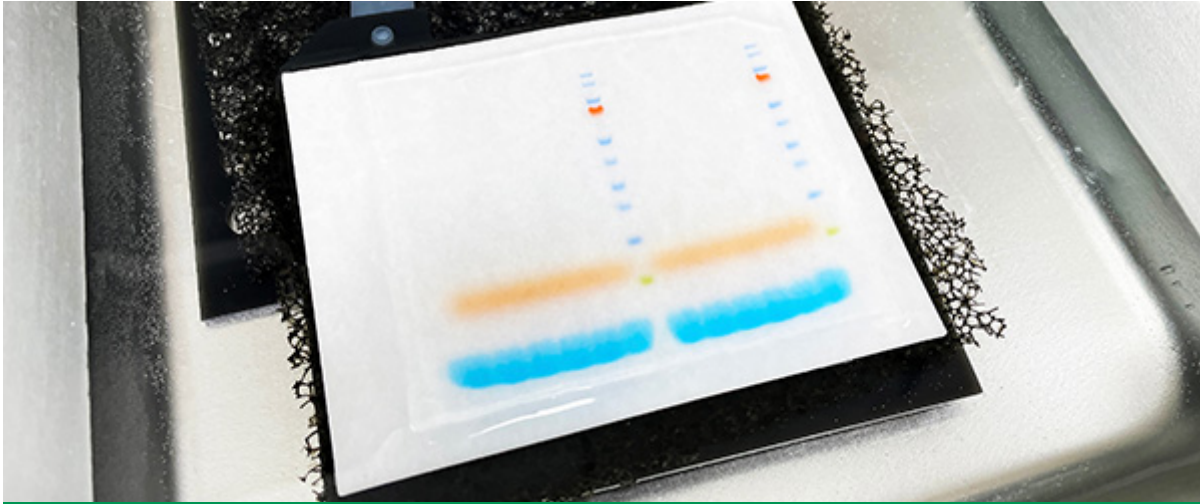
[Learn More](#)



Part 5: Primary Antibodies

- [Considerations for Selecting a Primary Antibody](#)
- [Reprobing and Stripping for Additional Target Proteins](#)
- [Considerations for Antibody Validation](#)

[Learn More](#)



Part 6: Secondary Antibodies

- [Advantages of Indirect Detection](#)
- [Considerations for Choosing a Secondary Antibody - Host Species](#)

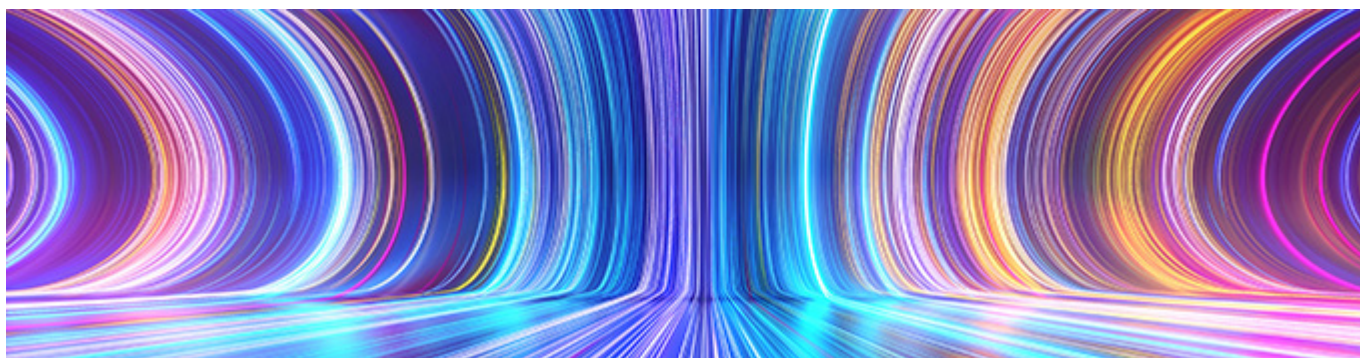
[Learn More](#)



Part 7: Membrane Washing

- [Wash Step Procedure](#)
- [Choosing an Appropriate Wash Buffer](#)

[Learn More](#)



Part 8: Visualization

- [Colorimetric Detection](#)
- [Chemiluminescent Detection](#)
- [Fluorescent Detection](#)

[Learn More](#)